



SUPPLEMENTAL/BID BULLETIN No. 02-A

**SUPPLY, DELIVERY AND INSTALLATION OF LED WALL
 (EARLY PROCUREMENT ACTIVITY)**

PB-EPA-2024-006

This Supplemental/Bid Bulletin is being issued to all prospective bidders to provide clarification, modifications, and/or amendments to the Bidding Documents, as outlined below. This shall form an integral part of the Bidding Documents.

From:	To:
<p>Specifications:</p> <p>Size: 3.84m*2.88m=11.06m2 (6*6=36 pcs) Pixel Pitch: 3mm LED Type: SMD2121 Cabinet Size: 640mm*480mm*62mm Cabinet Resolution: 208*156 pixels Module Size: 320mm*160mm Total Cabinets: 36pcs (6*6 cabinets) Die-cast aluminum Each Screen Resolution: 3893760 dots Brightness: 600 cd/m2 Refresh Rate: 3840Hz Total Module: 120 pcs Maintenance: Front</p> <p>Control System:</p> <p>Sending Card: 1 pc Receiving Card: 36 pcs Operating System: 1 pc Video Processor: 1 pc Laptop: 1 pc, i5 16GB with video card Electrical Equipment: 1 lot, Power Distribution Box Framing: 1 lot, Structural Framing & Electrical Wiring Others: 1 lot, Delivery, Installation, Commissioning & Training</p> <p>Accessories and Spare Parts:</p> <p>Module: 4 pcs Receiving Card: 2 pcs PSU: 2 pcs</p>	<p>Specifications:</p> <p>Size: 3.84m*2.88m=11.06m2 (6*6=36 pcs) Pixel Pitch: 2.5mm LED Type: SMD2121 Cabinet Size with Back Cover: 640mm*480mm*61.5mm Cabinet Resolution: 256*192 pixels Module Resolution: 128*64 pixels Module Size: 320mm*160mm Total Cabinets: 36pcs (6*6 cabinets) Die-cast aluminum Single-dot Brightness Calibration: Support White Balance Brightness: 600 cd/m2 Standard Color Temperature: 2000K – 9300K Adjustable Contract Ratio: 5000:1 Refresh Rate: 4200Hz Power Supply Input Voltage: AC200-240V, Frequency 47-63Hz Frame Changing Frequency: 60Hz Drive Mode: Constant Current Drive/32 Scan Processing Depth: 12-14 Bit Video Support: 2K HD, 4K UHD Total Module: 216 pcs Maintenance: Full Front</p> <p>Control System:</p> <p>Sending Card: 1 pc Receiving Card: 36 pcs Operating System: 1 pc Video Processor: 1 pc, supports input resolution up to 1920*1200@60Hz,</p>





FREE Spare Parts:

- Module: 2 pcs
- Receiving Card: 1 pc
- PSU: 1 pc
- Signal Cable: 1 pc
- Flat Cable: 1 pc
- Power Cable: 1 pc

General Items: 2 years standard free warranty

Spare Parts: Provide spare parts free of charge

Delivery Lead Time: 75 days after receipt of Notice to Proceed

10bit/8bit HD video source, the loading capacity: 2.3 million pixels

Laptop: 1 pc, i7 16GB RAM with 4GB video card

Electrical Equipment: 1 lot, Power Distribution Box

Framing: 1 lot, Structural Framing & Electrical Wiring

Others: 1 lot, Delivery, Installation, Commissioning & Training

AVR: 10KVA

Accessories and Spare Parts:

- Module: 4 pcs
- Receiving Card: 2 pcs
- PSU: 2 pcs

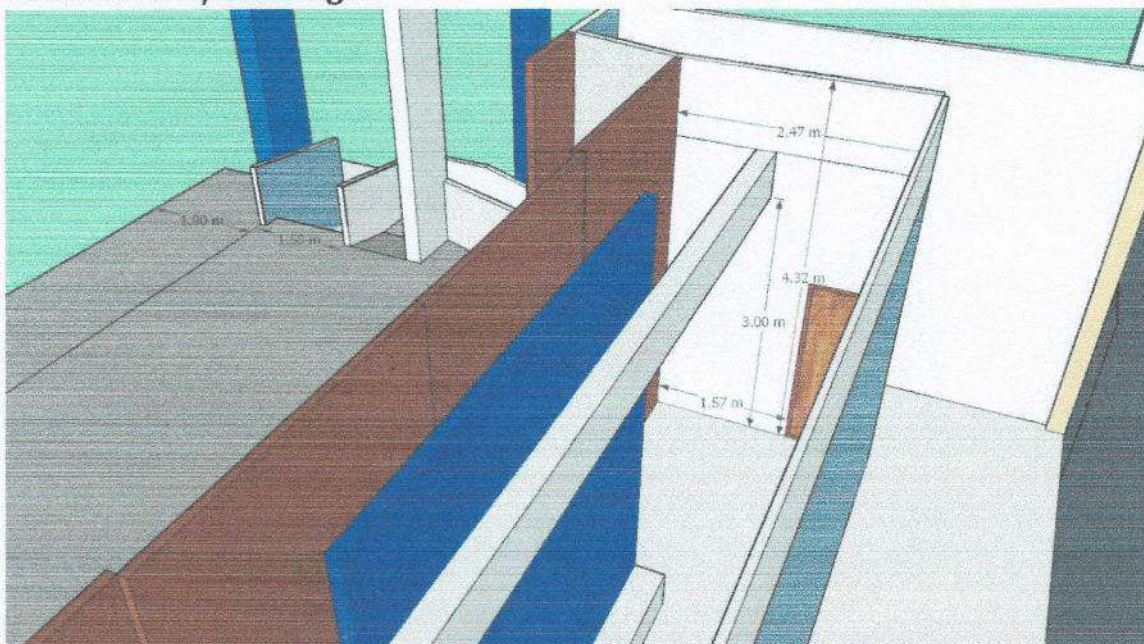
General Items: 2 years standard free warranty for both service and parts, including onsite support and quarterly maintenance

Spare Parts: Provide spare parts free of charge

Delivery Lead Time: 75 days after receipt of Notice to Proceed

Manufacturer: The product should be from one of the top 10 LED wall manufacturers and include a product certificate. It must be a high-quality LED wall and come with an attached brochure.

Location Plans/Drawings:

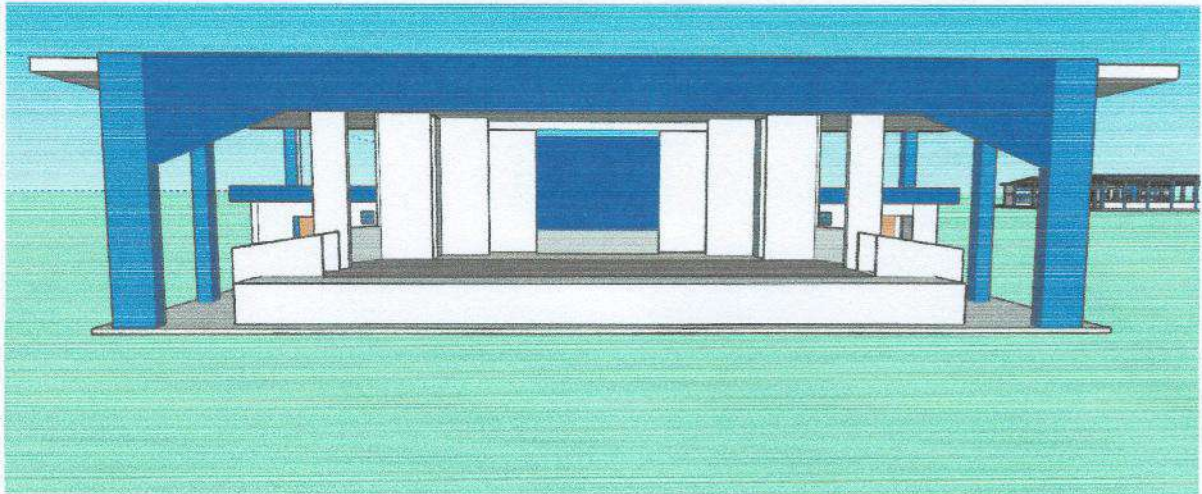
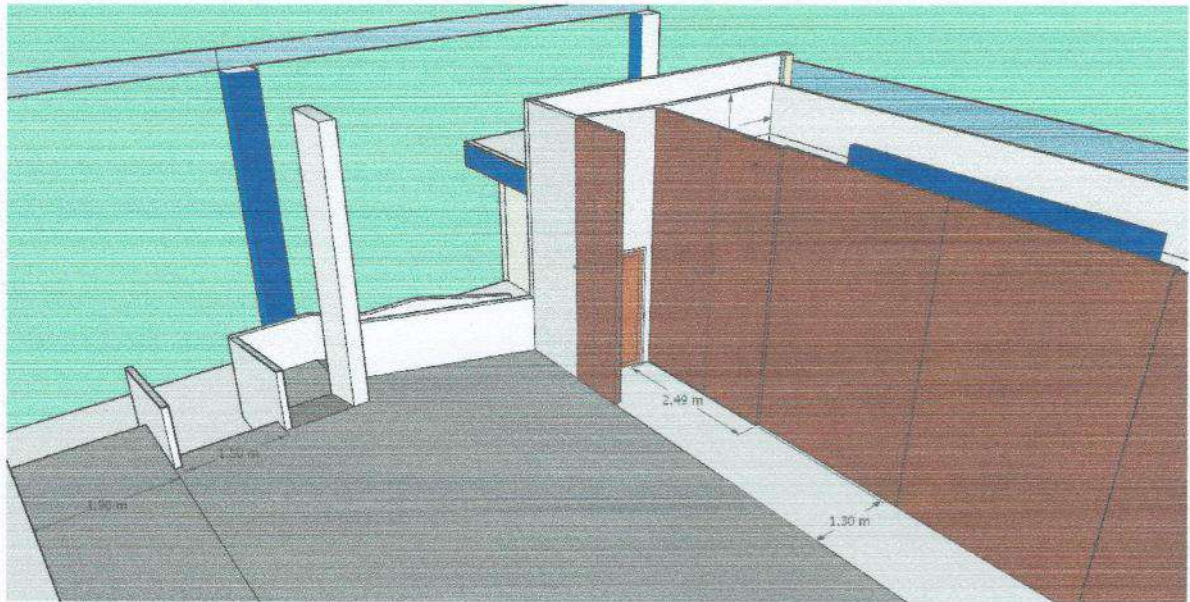




**SOUTHERN LEYTE
STATE UNIVERSITY**
San Juan Campus, San Jose, San Juan, Southern Leyte
Email: bac_sj@southernleytestateu.edu.ph
Website: www.southernleytestateu.edu.ph



Excellence | Service | Leadership and Good Governance | Innovation | Social Responsibility | Integrity | Professionalism | Spirituality

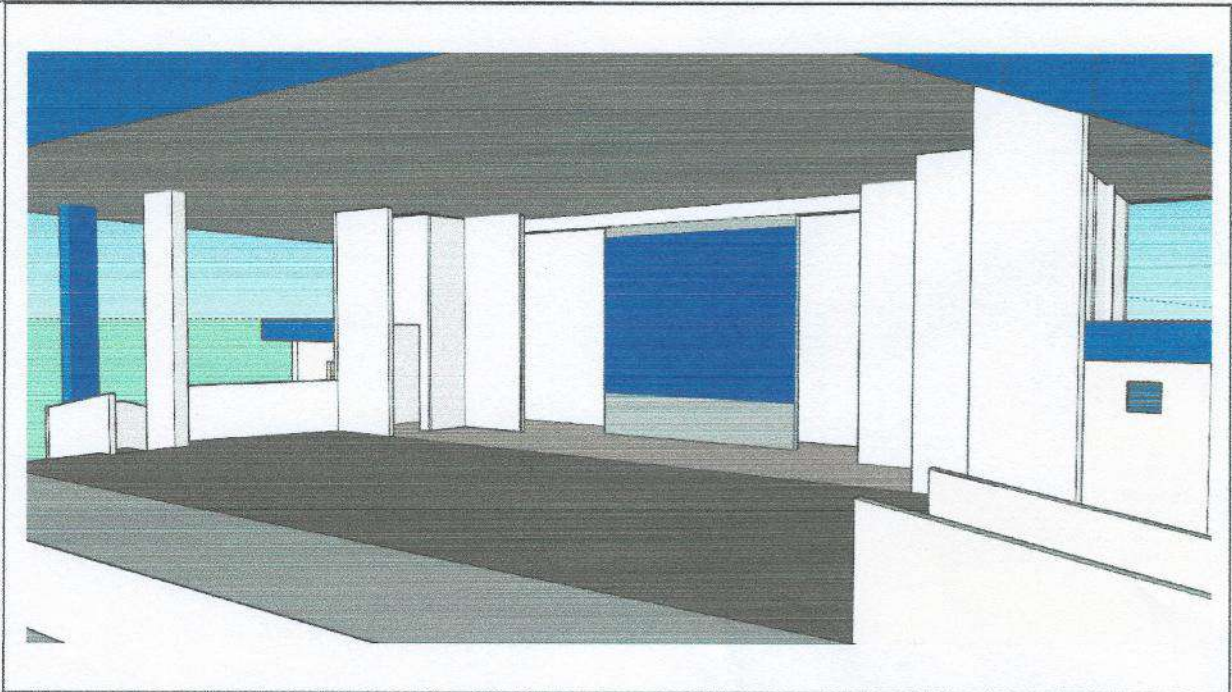




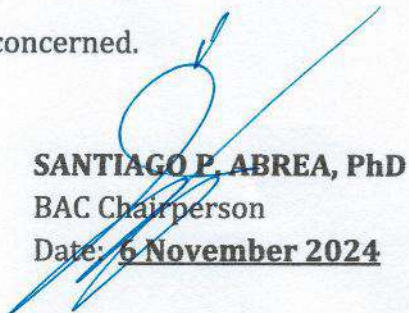
**SOUTHERN LEYTE
STATE UNIVERSITY**
San Juan Campus, San Jose, San Juan, Southern Leyte
Email: bac_sj@southernleytestateu.edu.ph
Website: www.southernleytestateu.edu.ph



Excellence | Service | Leadership and Good Governance | Innovation | Social Responsibility | Integrity | Professionalism | Spirituality



This is for the guidance and information of all concerned.


SANTIAGO P. ABREA, PhD
BAC Chairperson
Date: **6 November 2024**

